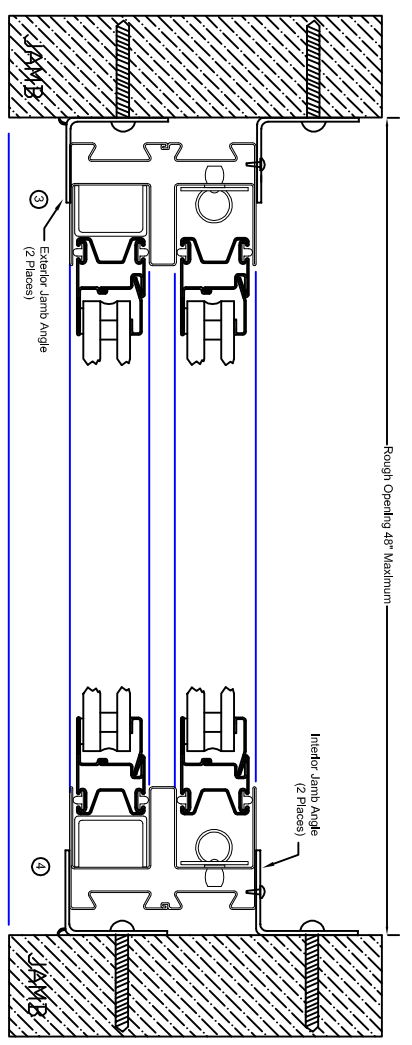
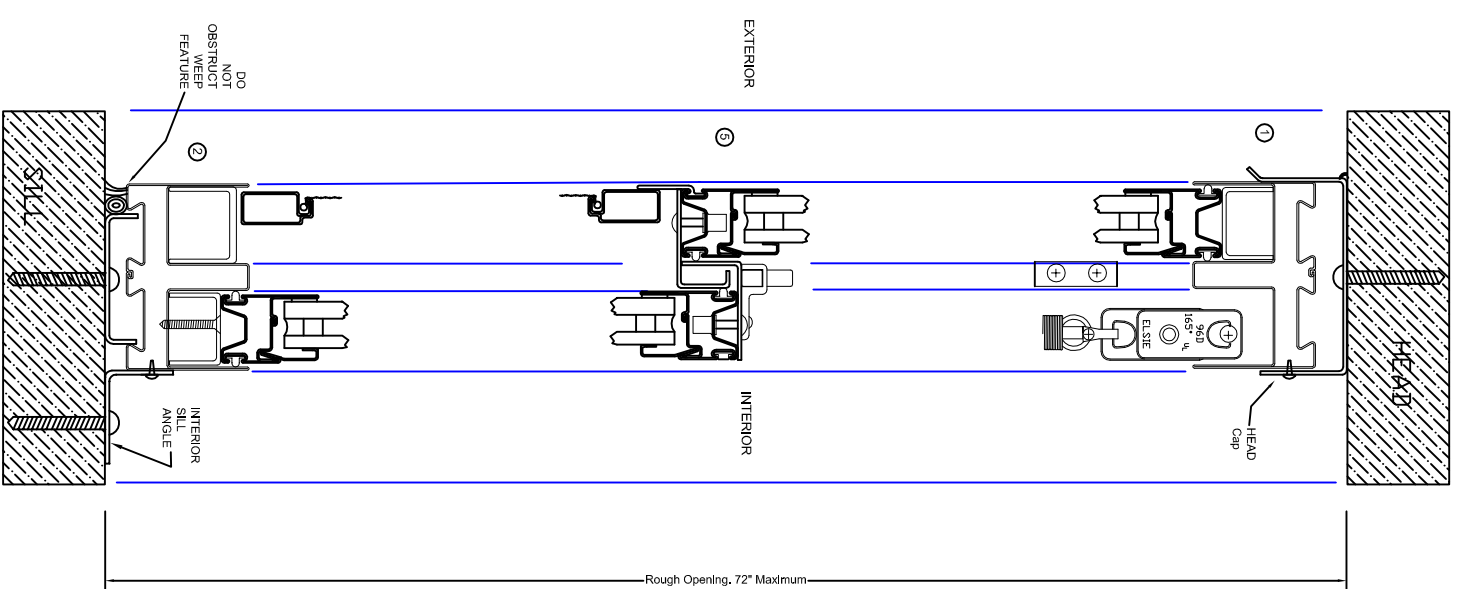


DESIGN LOAD CAPACITY - PSF			
WINDOW DIMS.			
WIDTH	HEIGHT	EXT. (+)	INT. (-)
48	72	55	55
(4)	(5)		

Number in parenthesis indicates number of anchors per Jamb, Head or Sill subframe angle.



FYRE-TEC SERIES 925P UL LABELED STEEL FIRE RATED WINDOW
Design load ratings for these windows to be as per chart shown lower left

Fastener Schedule:

Anchors shall be spaced as indicated on details. Subframe: jamb, head and sill fasteners to be corrosion resistant #10 x 1 1/2" wood or self tapping screws, spaced at 16" on center maximum, with a maximum of 3" from each end. 1/2" self tapping screw will attach trim components to window frame on interior side same spacing as previous.

Silicone caulking applied to all visible seams between wall and window framing connected by subframe install kit.

Windows glazed with 1 1/8" IGU (3/8" ceramic fire-glass over 1/4" annealed.

General Notes:

1. This is a non-impact fire-rated window system in accordance with and meeting the requirements of the Florida Building Code (FBC).
2. Impact shutters are required with these units.
3. Buck, framing and masonry by others and is the responsibility of the architect or engineer of record.
4. This installation procedure does not address the sealing consideration that may arise in different wall conditions. See the installation instructions packaged with the window.
5. The Single hung windows have been tested and meet the performance requirements of Class R-PG55-H Iaw ANSI/AAMA/CSA 101/11.S.2/A440-11 (UL Report Project 4788094719) and have been Classified as such by Underwriters Laboratories (File R21803).

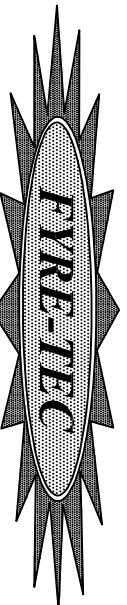
IGU

NOT TO SCALE

TOLERANCE:

1. Fractions ±1/16
2. Decimals +- .0625
3. Angles +- 1/2 degree

Except as Noted

Series 925P Single Hung Window Installation	
DWN BY ERIN EILERS	
CR'D BY	
DATE 8/1/17	701 Centennial Road Wayne, Nebraska 68787 Phone 1-800-377-3261 Fax 1-402-375-4261
NEXT ASSY NTS	PAGE OF 1 DWG No. 925P